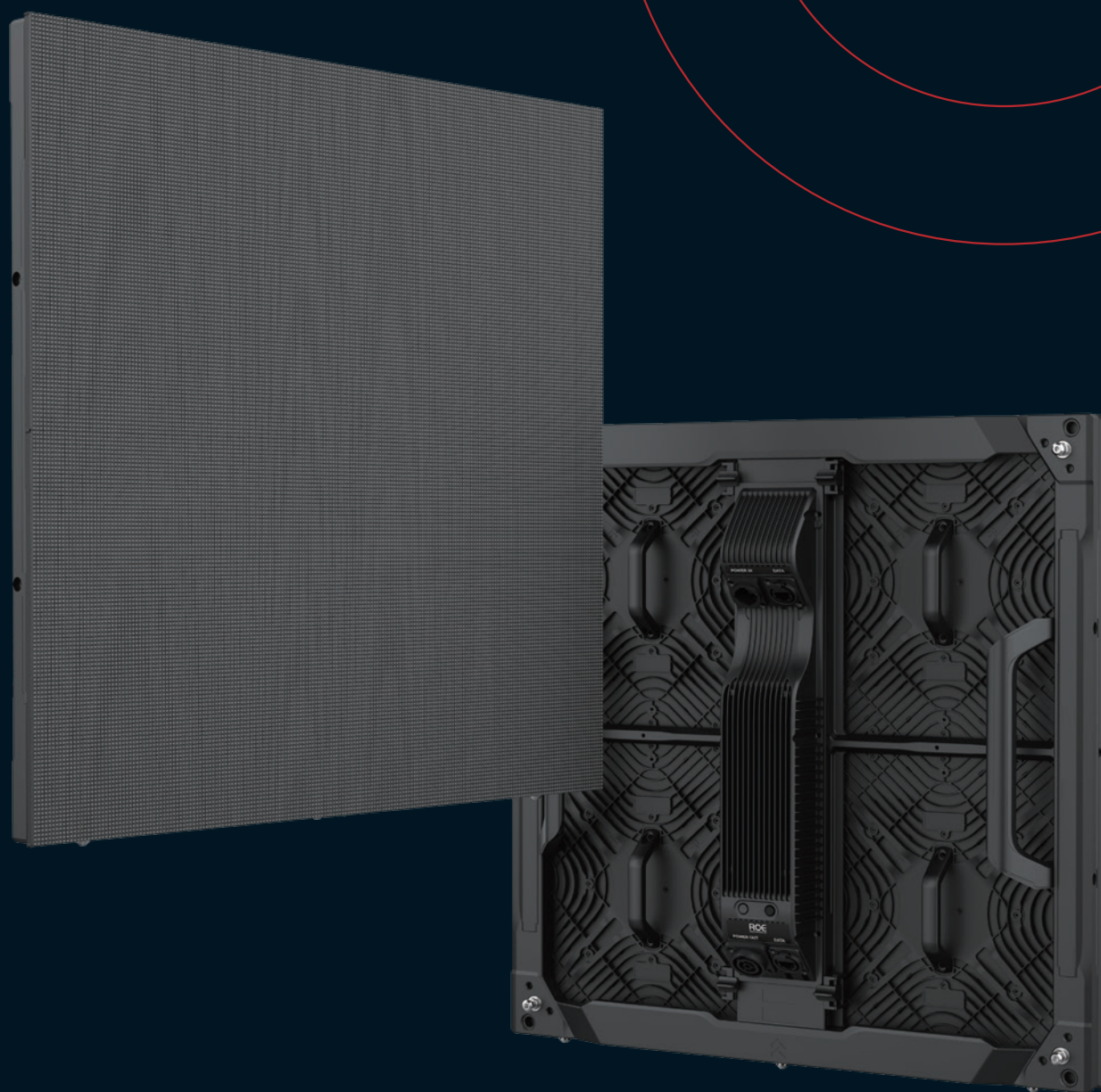




## DIAMOND 2.6

### LIGHTWEIGHT

SMALL-PITCH SOLUTION



#### Diamond 2.6 by ROE Visual offers a lightweight, small-pitch alternative

The lightweight Diamond 2.6(DM2.6) small-pitch LED panel incorporates magnesium alloy frame design for an easy-to-stack or hang solution. It's available in both flat or curved configurations and suitable for indoor configurations. The DM2.6 is the ideal cost-effective LED display solution for rental, staging and fixed applications.

## Diamond 2.6

Lightweight, small-pitch solution



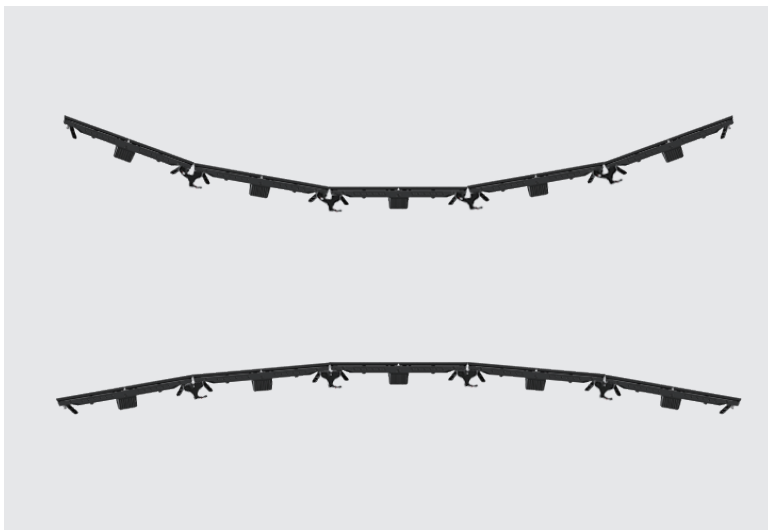
### Ultra-Lightweight

Diamond 2.6 panels measure 500x500mm and weigh less than 5.76kg per panel. Lightweight magnesium alloy frame ensures extreme durability.



## Superb Visual

The sleek design with Black LED's add high contrast and brightness for a vivid viewing experience.



## Curving Capability

Concave and convex curving capabilities provide expanded flexibility to realize uniquely creative stage design.



## Magnet-assisted Assembly

Magnets are integrated in to the Diamond panel frame, offering easy setup in both hanging or stacking configurations.

# Specifications

Diamond	DM2.6
Pixel Pitch	2.60mm
Max Brightness Calibrated	1500nit
Panel Dimension	500 x 500 x 81mm 19.7" x 19.7" x 3.2"
Panel Resolution (H x V)	192 x 192
Weight Per Panel	5.76kg; 12.7lbs
Power Consumption Max/Average	180W / 90W
Transparency	Solid
Processing Platform	Evision/Brompton
Curving (Concave & Convex)	Concave 10°~Convex 5°
Max. Hanging (panels) *1	20
Max. Stacking (panels) *2	12
LED Configuration	SMD 1515 Black
Viewing Angle Vertical	120°
Viewing Angle Horizontal	140°
Multiplexing	16
Refresh Rate	1920
Gray Scale	14bit
Frame Material	Magnesium
Operational Temp / Humidity	-20°~ 45°C, 10~90%RH -4°~113°F, 10~90%RH
IP Rating (Front / Rear)	Indoor

\* Notes:  
1.The max. hanging amount is only valid when the ROE Visual hanging bar and complementary accessories are used and in an indoor situation, safety factor is 5. No climbing is allowed.  
2.The max. stacking amount is only valid when the ROE Visual stacking system and complementary accessories are used, sufficient ballast is applied and in an indoor situation, safety factor is 5. No climbing is allowed.

# Dimensions

